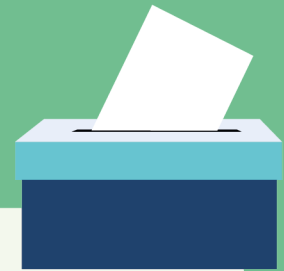


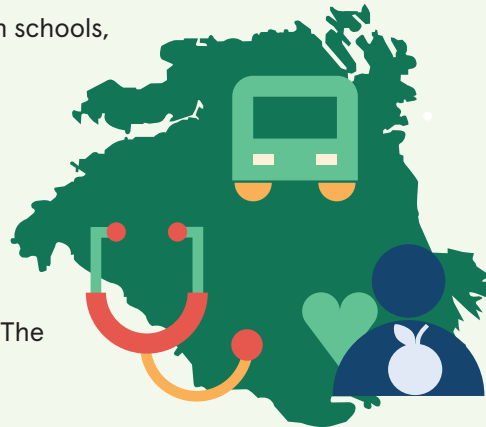
REGIONAL ELECTION
2022



This is Region Sörmland!

Health care, buses and trains, culture, folk high schools, and county development. Region Sörmland is responsible for many big and important issues that it is possible to influence, as the region is politically governed.

Below, we'll explain what that means, and how you can be part of influencing Region Sörmland's direction over the next four years. The election is on the 11th of September.



What does the regional council do?

The regional council is Region Sörmlands highest decision-making body, and is made up of politicians that you are part of electing. If you vote. How should our joint taxes be spent, what prioritisations should be made, and what should not be done? The elected politicians have a great deal of influence over how the region's operations are to be governed and run.

Health care is an important part of the region's operations, and something that everyone in Sörmland will encounter, at least at some point in their lives. But the region is also responsible for regional development, public transport and communications within the county, as well as regional cultural operations.

Why should we vote?

"In the regional election, you are influencing issues that are close to you, and decisions that are made where you live. The same applies to everyday issues that everyone has a relationship with, such as health care and public transport. So it's important to use your vote, to participate and influence," says Eva Andrén, who is a chief strategist within the regional chief executive's office.

Want to know more?

Read about the regional council election 2022 (swedish):
<https://regionsormland.se/val22>

Read more about democracy in the region (swedish):
<https://regionsormland.se/demokrati-insyn/>

Read more about how and where you vote (multiple languages):
<https://www.val.se/>

